



System Questionnaire

Company:
Telephone:

Contact Name:
Fax:

Project:
Email:

iCT Sensors		
Advise total quantity of sensors required		Total Qty Required
Type 1010 / 1040 marine - Digital output Only		
Type 1020 / 1050 marine - Analogue output Only		
Type 1020 / 1060 marine - Analogue & Digital outputs		
<i>Sensor details including fittings cable lengths and configuration details - please complete specification sheets DOC 054 and refer to model coding sheet for clarification</i>		
RFM-1 & RFM-4 Termination Modules		
<i>Each iCT should be terminated directly to an RFM-1 (single input) or RFM-4 (4 input) termination module. The best choice depends upon locality to minimise cable runs. Refer to Page 4 for guidance</i>		
Advise Total quantity of RFM-1 & RFM-4 required		Total Qty Required
RFM-1 Coated Aluminium termination Module for single iCT IP67 (below decks)		
RFM-4 Coated Aluminium termination module for up to 4 x iCT's IP67 (below decks)		
RFM-1 Marine Grade Galvanised Steel termination Module for single iCT IP67 (deck mounting)		
RFM-4 Marine Grade Galvanised Steel termination module for up to 4 x iCT's IP67 (deck mounting)		
RFM ISR - Safety barriers for intrinsically safe applications		
<i>Each RFM ISR can provide both power and data protection for up to 127 iCT's operating in digital mode only, where they are terminated using either a RFM-1 or RFM-4 termination module. The actual quantity required will vary dependent upon actual attached equipment and also on the best cable routing. Refer to Page 4 for guidance</i>		
Advise Total quantity of RFM ISR safety barriers required		Total Qty Required
RFM ISR Coated Aluminium Regulated Communications and Power Barrier input limits 15 to 35V dc IP67		
RFM ISR Marine Grade Galvanised Steel Regulated Communications and Power Barrier input limits 15 to 35V dc IP67		
<i>Where other equipment connected to the PSM system is to be located in the hazardous area please specify details</i>		
Product details	PSM Supply	Others
<i>Where additional equipment is to be specified please add further sheets</i>		

iCT Transmitter model codings

DOC Ref 053 Issue C

1010	Digital output only - Includes 3 metres Heavy Duty Cable	
1020	Analogue output only - Includes 3 metres Heavy Duty Cable	
1030	Analogue & Digital outputs - Includes 3 metres Heavy Duty Cable	
1040	Digital output only - Includes 3 metres Heavy Duty Cable - Marine Duty	
1050	Analogue output only - Includes 3 metres Heavy Duty Cable - Marine Duty	
1060	Analogue & Digital outputs- Includes 3 metres Heavy Duty Cable - Marine Duty	
A	Maximum range - 2.0m H2O (200 Millibar)	
B	Maximum range - 3.5m H2O (350 Millibar)	
C	Maximum range - 10m H2O (1Bar)	
D	Maximum range - 20m H2O (2Bar)	Other ranges available on special request
E	Maximum range - 50m H2O (5Bar)	
F	Maximum range - 100m H2O (10 Bar)	
G	Maximum range - 200m H2O (20 Bar)	
Fitting Options		
-	Standard Fittings - Welded	
A1	Basic submersible sensor 1/2" BSP female with Nosecone (Std option for adapting)	
A2**	Basic submersible sensor with drain wire adaptor - Specify length per metres	
A3	Pole adaptor fitting threaded 1/2" BSP female	
A4	Free Standing	
A5	Free standing with Pole adaptor fitting threaded 1/2" BSP female	
A6	DN25 PN16 flange mounting	
A7	DN40 PN16 flange mounting	
A8	DN50 PN16 flange mounting	
A9	1" ANSI 150lb flange mounting to BS1559	
AA	1 1/2 ANSI 150lb flange to BS1560	
AB	2" ANSI 150lb flange to BS1560	
AE	Pole adaptor fitting 2" x 1 1/4" OD For Compression Adaptor	
-	Optional Fittings - Screwed via Adaptor (Supplied Loose)	
S1	Tank fixing clamp	
S2	Threaded process connection 1/2" BSP male	
S3	Threaded process connection 1/2" NPT male	
S4	Threaded process connection 1/2" NPT female	
S5	Threaded process connection 1/4" BSP female	
S6	Threaded process connection 1/4" BSP male	
S7	Threaded process connection 1/4" NPT female	
S8	Threaded process connection 1/4" NPT male	
S9	Threaded process connection 3/4" BSP female	
S10	Threaded process connection 3/4" BSP male	
S11	Threaded process connection 3/4" NPT female	
S12	Threaded process connection 1" BSP female	
S13	Threaded process connection 1" BSP Male	
S14	Threaded process connection 1" NPT female	
S15	Threaded process connection 1" NPT male	
S16	Running nut connection 3.4" BSP female	
S17	Running nut connection 3.4" BSP female with NRvu plunger	
**	Total cable length in mtrs - Extra over 3 mtrs - (std) per metre	
S	Hazardous Area Approval NOT APPLICABLE	
I	Hazardous Area Approval REQUIRED	
N	Non Factory Configured	
F	Factory Configured to Customer Requirements	
O	Model 1050 with Volumetric scaled Output	
**	Transmitter set range in metres H2O	
COS**	PTFE oversheath / metres	

Example model code 1040 / C / S1 / 6 / I / F / 7.5mH2o / COS8

Options highlighted in yellow may incur longer Turnaround ask PSM for details

**SALES DRAWING ONLY
NOT TO BE USED FOR MANUFACTURE**

SCALE

NTS

UNLESS OTHERWISE STATED DIMENSIONS ARE IN
MILLIMETRES / INCHES

TITLE

iCT System Guide

DRAWING NO

DOC Ref 053 Page 4

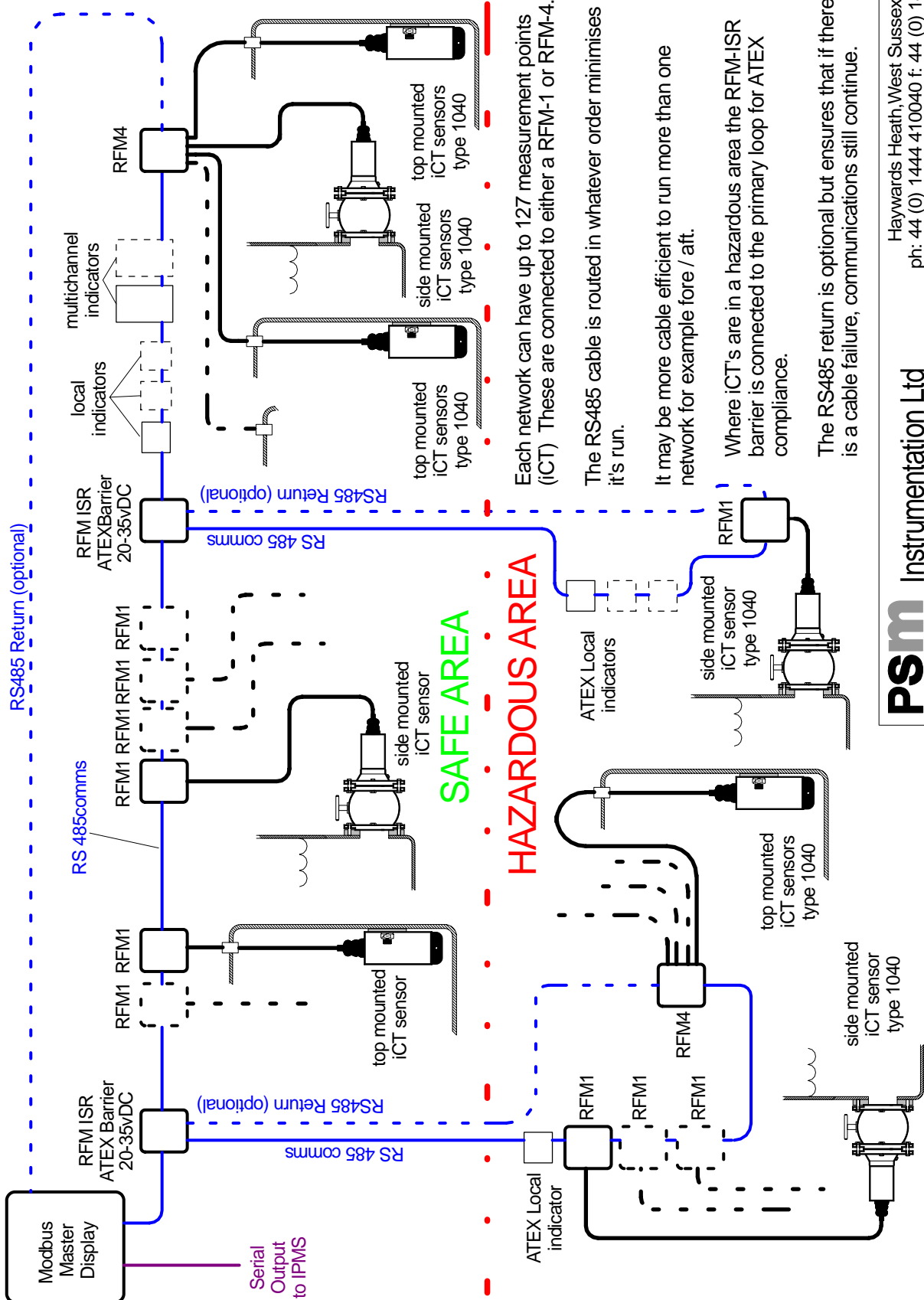
SHT 1
OF 1

A4

PSM Instrumentation Ltd

Haywards Heath, West Sussex RH16 1TW
ph: 44 (0) 1444 410040 f: 44 (0) 1444 410121
<http://www.psm-sensors.co.uk>

ISSUE	A
DATE	6/5/09
DCR	
DRAWN	JEC
CHECKED	



Each network can have up to 127 measurement points (iCT). These are connected to either a RFM-1 or RFM-4.

The RS485 cable is routed in whatever order minimises it's run.

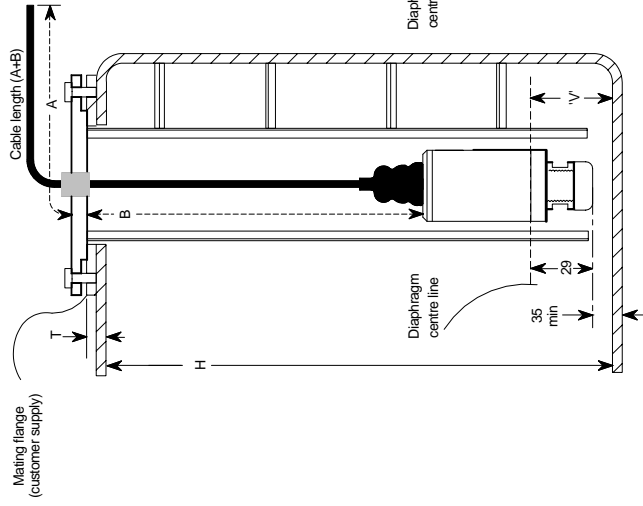
It may be more cable efficient to run more than one network for example fore / aft.

Where iCT's are in a hazardous area the RFM-ISR barrier is connected to the primary loop for ATEX compliance.

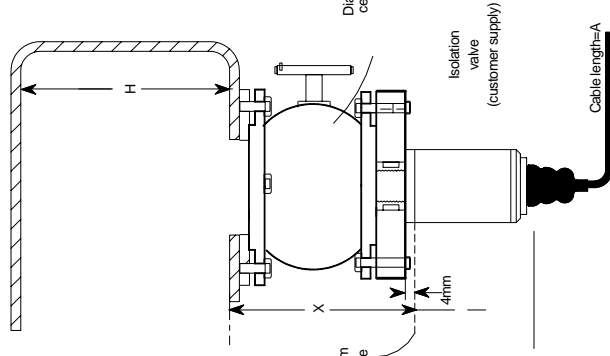
The RS485 return is optional but ensures that if there is a cable failure, communications still continue.

ICT Specification Sheet

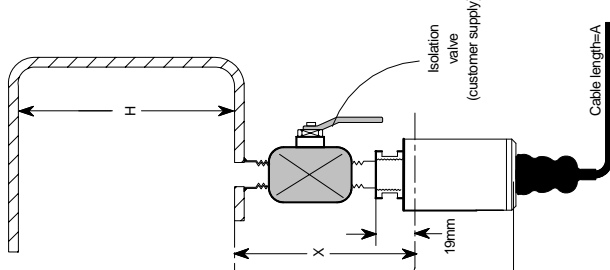
SUSPENDED IN SOUNDING PIPE INSTALLATION
Fitting A1



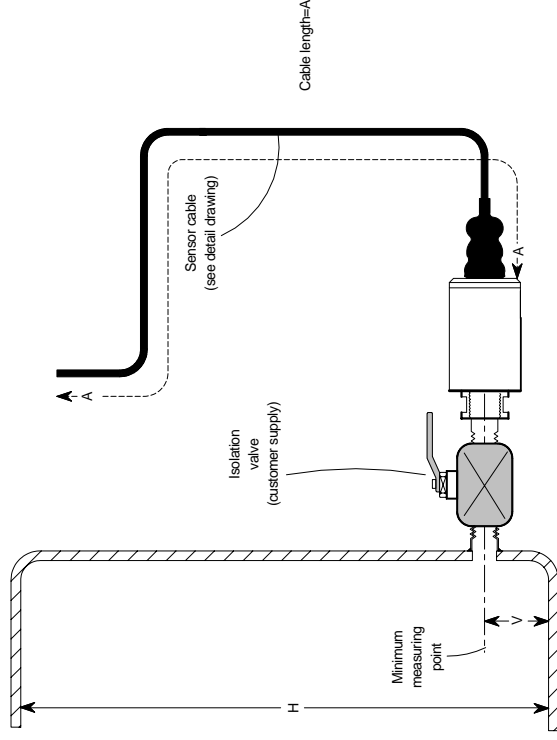
FLANGE MOUNTING VERTICAL INSTALLATION
Fitting A6, A7, A8, A9, AA & AB



VERTICAL THREADED MOUNTING
Fitting A1, S2 to S15



HORIZONTAL THREADED MOUNTING
Fitting A1, S2 to S15



(Note: for screwed fitting check classification requirement)

Tag No	Fitting Code	Cable length 'A' 'B' Outside tank / Inside tank	Sensor fitting height 'V'	Height 'H'	Mounting horiz. or vert.	Tank contents	S.G.	Wall Thickness + tank flange 'T'	Gland 'G' size

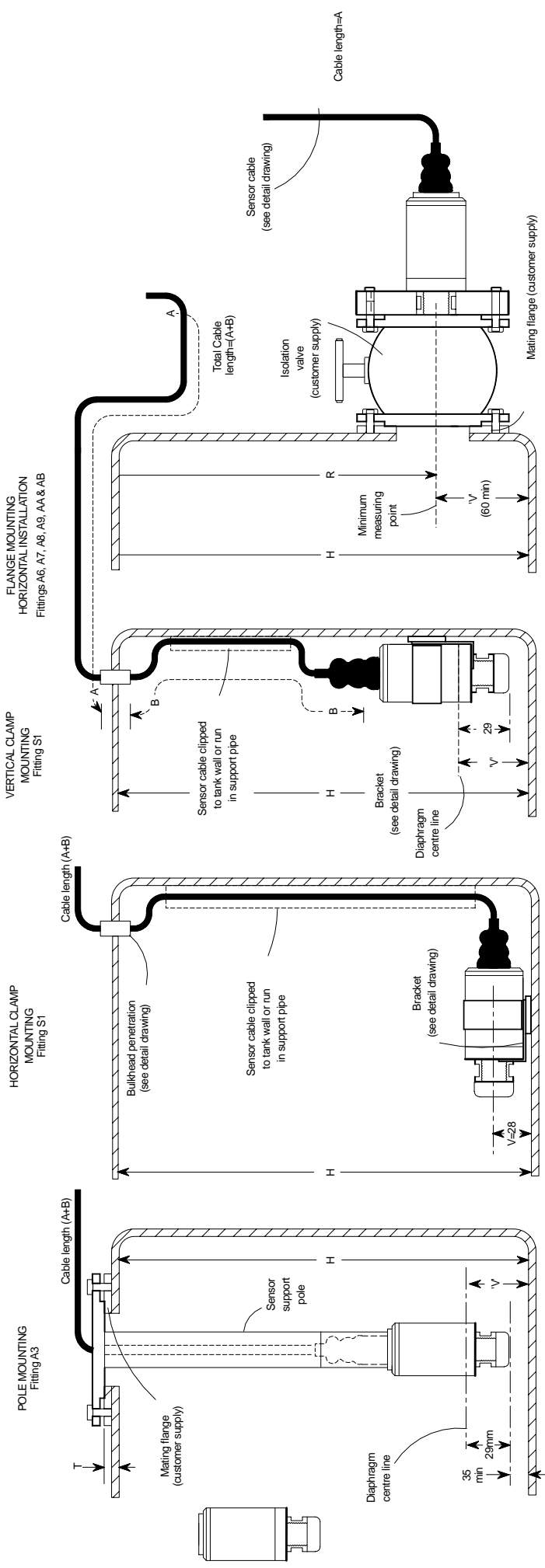
CLIENT:

CLIENT REF:

PSM REF:

SHEET OF

iCT specification sheet



Tank No	Tag No	Fitting Code	Cable length 'A' Outside tank 'B' Inside tank	Sensor fitting height 'V'	Height 'H'	Mounting horiz. or vert.	Tank contents	S.G.	Wall Thickness + tank flange 'T'	Gland 'G' size

CLIENT:

CLIENT REF:

PSM REF:

SHEET OF

