

ClearView



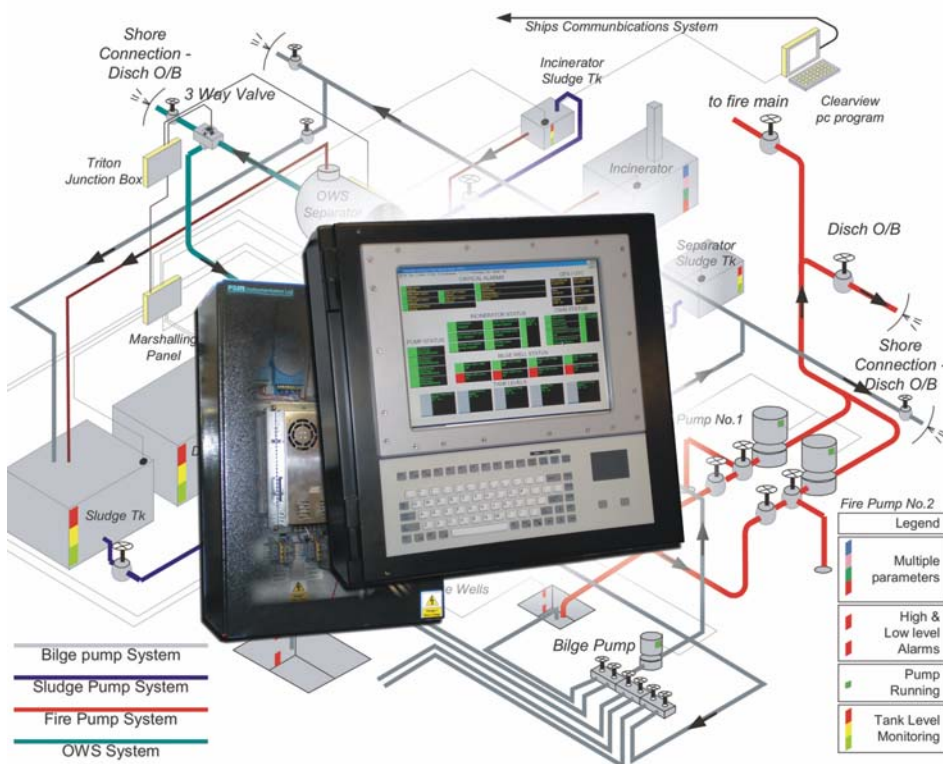
OILY-WATER OVERBOARD DISCHARGE MONITORING

features

- ✿ Guards against costly Marpol and Agency Incident fines due to accidental OB discharge
- ✿ Monitors the functions of entire oily waste management system including OWS, Incinerator, bilge, ppm analyser, & OB discharge valves. Interlocks are automatically controlled to prevent discharge overboard when in prohibited area or where PPM exceeds permitted limits.
- ✿ All activities and events are logged and stored securely and routinely uploaded to the central server via the Ships communication system

ClearView™ has been developed by PSM to offer a complete tamperproof monitor of all ODME functions thereby preventing the probability of an illegal or accidental over board discharge of oily water.

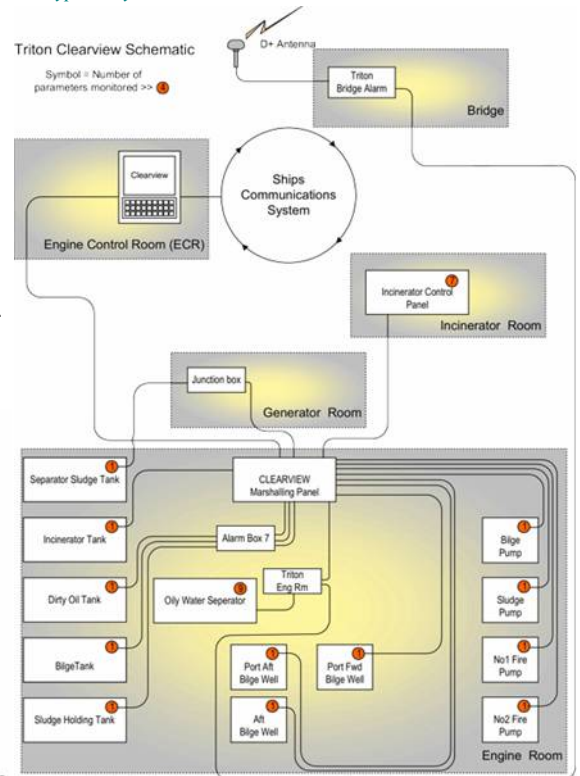
The operations are automatically permanently logged in an electronic “oil record book” format to support and protect the crew



Meeting IMO MEPC 107 (49) and SCG MED requirements may not be sufficient to avoid fines or prosecution.

No matter how carefully controlled OWS systems are, accidents and equipment malfunctions occur. Incidents of over limit discharge are easily traced by GPS and Satellite imaging, leading to costly fines and vessel exclusions. Recently, these fines for non-habitual occurrences have been set by the courts at several millions of US\$ per incident.

Typical System with ClearView linked to Transas Triton™



ClearView™ will take the worry out of accidental overboard discharge by overriding the existing OWS plant and all machinery with a real-time monitoring and fail-safe activation system.

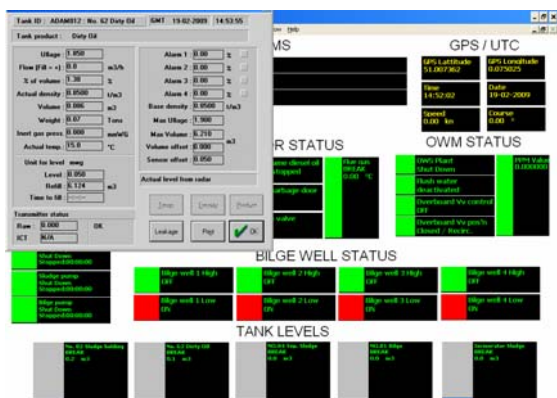
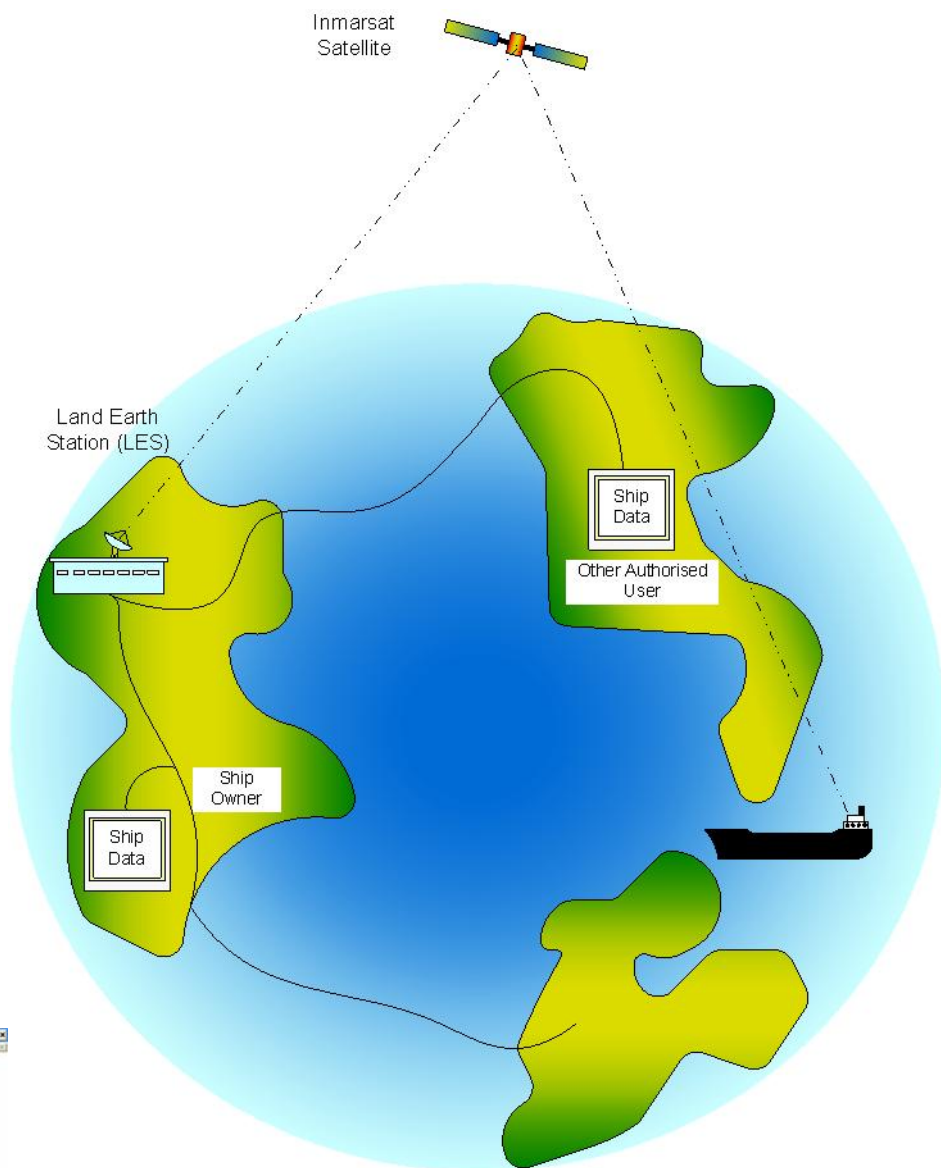


benefits

- ✦ Provides essential Operator's proof of correct OWS management
- ✦ Proven hardware with functionality accepted by US Coast Guard
- ✦ Connects directly to Ships Communication Management System for routine transmission of logged data
- ✦ Comprehensive and easy to read graphical display provides ships crew with a complete overview

For added security a GPS "Geo-Fence" and auto-interlock and divert control ensures no out of limit discharge can occur in protected areas. Real-time data gathered from the ship is securely stored but linked into Ships Communication System for uploading to the central server for viewing by Operators and Authorities as required.

The system is designed as a complete and integrated equipment package that is easily and inexpensively tailored to suit each vessel. Signals are collected from existing sensors in most cases saving unnecessary duplication and cabling. PSM manufactures a full range of Type approved sensors and can provide any additional measurements and alarm initiators if required. The system marshalling enclosure provides all the hardware termination facilities to make installation fast and simple and during a vessels normal turnaround wherever possible.



ClearView™ provides a clear graphical display of all parameters tailored to suit each installation. It provides operators with an immediate overview of all parameters related to Oily Water handling and discharge, with immediate warnings of any alarm conditions

All functions and operations are automatically and securely logged and routinely forwarded via the ships LRIS to an online Server, where they may be reviewed from any location, giving the senior officers the peace of mind that their ship is truly "Clean Compliant", and essential proof of correct operation.



advice & enquiries

Telephone: +44 (0) 1444 410040
 Fax: +44 (0) 1444 410121
 Email: sales@psm-sensors.co.uk
 Web: <http://www.psm-sensors.co.uk>

Clearview is a registered design. All rights reserved 2008

PSM Instrumentation Limited
 Burrell Road Haywards Heath W Sussex RH16 1TW UK

T +44 (0) 1444 410040 F +44 (0) 1444 410121 W www.psm-sensors.co.uk E sales@psm-sensors.co.uk