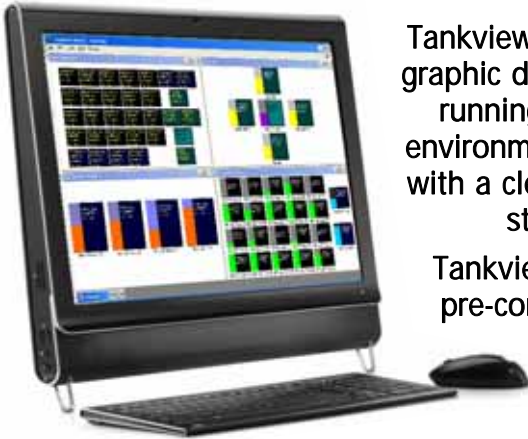


TANKVIEW

For Windows



Tank Monitoring and Control Software package



Tankview is a simple to operate graphic display software package running within the Windows environment. It provides the user with a clear picture of the current status of all inputs.

Tankview is generally supplied pre-configured and tailored to meet application parameters and user preferences.

graphic display package

Each sensor input is represented by a graphical object which shows the current status in the form of a bargraph. Current numeric values such as level, volume and ullage may also be displayed in any chosen unit.

Each input object is individually configurable for all parameters including tank shape correction, SG, & offsets. Secondary temperature, top pressure and density inputs can also be incorporated to provide automatic volume correction.

Sensor input objects can be arranged in a number of windows according to tank duty or location; i.e. ballast, cargo, fuel oils, fresh water etc. providing a clear picture of the current status of all inputs.

inputs

The input data can be collected from a variety of sources including conventional 4 to 20mA analogue devices, switched inputs, and our new generation of ICT digital ceramic MODBUS sensors and RFM function modules & barriers utilising RS-485 communication protocol; the industry's most widely used bi-directional, balanced transmission line suitable for industrial environments.

Input data is received via the PC's serial or USB port using industry standard data acquisition modules, alternatively the 9 way serial port may be used directly for digital inputs providing it is equipped with auto flow control.

Tankview will have been configured with the necessary communication package, and in operation this aspect is transparent to the user as scanning & up-dating of values is an automatic background function.

outputs

Tankview provides visual indication, audible alarm and recording of up to 4 alarm events for each input, these events may be used to trigger external warning devices via relay outputs.

An RS232 or RS 485 serial output protocol enables communication of formatted data to plant / shipboard management systems. Alternatively data may be logged to the PC's hard drive for access by other applications.

key features

Marine and industrial

Fully adaptable to suit user application

Can run on any Windows based PC

Any 4 to 20 mA and/or digital inputs/outputs

System fully user configurable

Compensation algorithms include pressurised tanks, auto density correction, temperature, auto-trim factor (marine) etc

single Tank Display

Each input object can be further interrogated using a single tank display which provides comprehensive data for that input alone.



The single tank display window enables the user to view and print a detailed report of the current status of that particular tank including volume, weight, density and actual level. When configured, several parameters such as the temperature, density and product can be manually changed from this window which in turn automatically adjusts the volume readings as appropriate.



Simple networks

TANKVIEW

For Windows



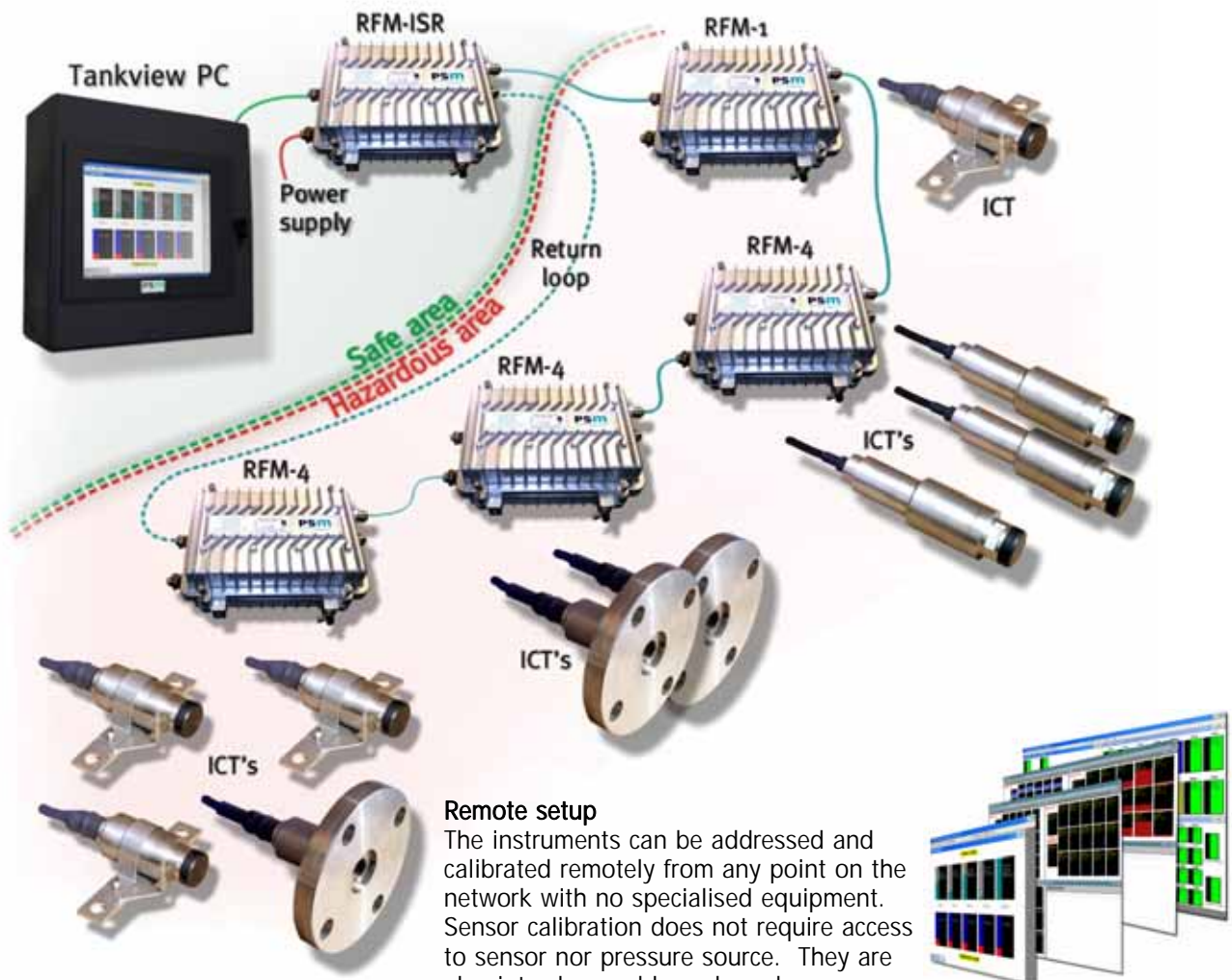
Tankview combined with our new generation of ICT digital level, pressure and temperature sensors provide a complete tank gauging solution offering clear advantages and cost savings due to the multi-drop configuration, reduced power consumption and remote setup.

Reduced cabling and equipment requirements

The instruments are interconnected in a multi-drop configuration where the cable goes from point to point rather than each connection being run all the way back to a data acquisition module or central display - save 80% of cable cost typically.

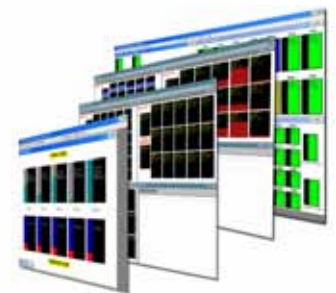
Reduced power

The equipment run in digital mode has a much lower power consumption enabling multiple instruments to be connected via a single power / communications barrier for ATEX compliance as opposed to each requiring it's own supply and barrier. For a typical 50 channel system save 49 zener barriers



Remote setup

The instruments can be addressed and calibrated remotely from any point on the network with no specialised equipment. Sensor calibration does not require access to sensor nor pressure source. They are also interchangeable and can be configured after installation reducing spares requirements. The configuration data is stored in non-volatile memory both on the sensors themselves and within the Tankview central monitor for instant data restoration to a replaced sensor.



PSM

advice & enquiries

Telephone: +44 (0) 1444 410040

Fax: +44 (0) 1444 410121

Email: sales@psm-sensors.co.uk

Web: <http://www.psm-sensors.co.uk>

Tankview is a registered design. All rights reserved 1996

PSM Instrumentation Limited

Burrell Road Haywards Heath W Sussex RH16 1TW UK

T +44 (0) 1444 410040 F +44 (0) 1444 410121 W www.psm-sensors.co.uk E sales@psm-sensors.co.uk